

Edentulous Cases | Radiographic Guide Protocol

RADIOGRAPHIC GUIDES

PLEASE FOLLOW THE CHECKLIST BELOW TO MAKE SURE THE RADIOGRAPHIC DENTURE WILL WORK PROPERLY FOR THE SCAN.

DENTURE REQUIREMENTS

- NO metal or radiopaque material
- Excellent fit to soft tissue and patient cast
- Hard reline all acrylic - no soft reline or denture adhesive
- Radiographic markers



6 BB Stickers will be placed on the Denture for a Dual Denture CBCT of the patient wearing the Denture and the Denture by itself. We will merge the denture in the treatment planning software program. Our imaging centers have the BB stickers.



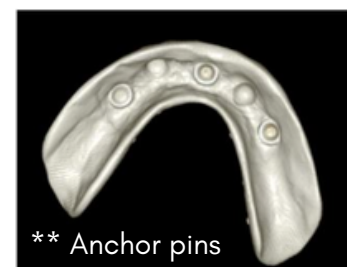
**NO SOFT RELINE!!
(SQUISHY INSIDE)**



FABRICATE BITE SUPPORT FOR USE DURING CBCT SCAN

Dentures with **anchors to implants may not need a bite support, all other cases please provide a PVS bite support to correctly seat the dentures to the intaglio surface during the patient scan. This is important to the planning process so that the implants will be placed correctly during the surgery. The guide will have a duplicate fit of the denture.

- Ensure no overlap of incisal or posterior occlusion
- Use stiff, **radiolucent bite** support material
- Cover complete arch
- If teeth are missing in opposing arch, fill edentulous space with index material to make contact with alveolar ridge
- Trim extra material on the lingual side to avoid marker displacement when the patient bites into it. Buccal tooth surface should be exposed



** Anchor pins

Edentulous Cases | Radiographic Guide Protocol

STEP 1

TAKE PREFERRED POLYVINYL SILOXANE (PVS) IMPRESSION, OR IF NECESSARY, ALGINATE IMPRESSION WITH A PLASTER MODEL POURED IMMEDIATELY.

- No drag
- No pull
- No bubbles
- Cover palette
- Deep into vestibule
- Cover retro molar pad



STEP 2

PREPARE PLASTER MODELS

- Must accurately reproduce the buccal and lingual margins
- Vestibule must be clear and understated



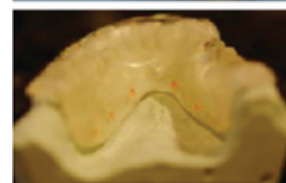
STEP 3

FABRICATE RADIOGRAPHIC GUIDE



The accuracy of this guide is very important, as it is the basis for fabricating the surgical guide.

- Use clear orthodontic acrylic
- Tooth position and size should represent the final prosthesis
- The crowns should be distinctively represented on the facial/buccal and occlusal aspects of guide
- Guide should cover occlusal surface of full arch
- Guide should extend over the gums on lingual/palatal side



STEP 4

FABRICATE BITE SUPPORT FOR USE DURING CBCT SCAN

- Ensure no overlap of incisal or posterior occlusion
- Use stiff, radiolucent bite support material
- Cover complete arch
- If teeth are missing in opposing arch, fill edentulous space with index material to make contact with alveolar ridge



WHAT DO YOU MARK ON THE PATIENT REFERRAL FORM?



1. Choose Small View and select arch of interest
2. Choose **Implant Survey**
3. Indicate planning program/kit type
4. Choose virtual design option - **Dual Scan - Marked Denture or Radiographic Guide**

[Click Here for eReferral](#)

