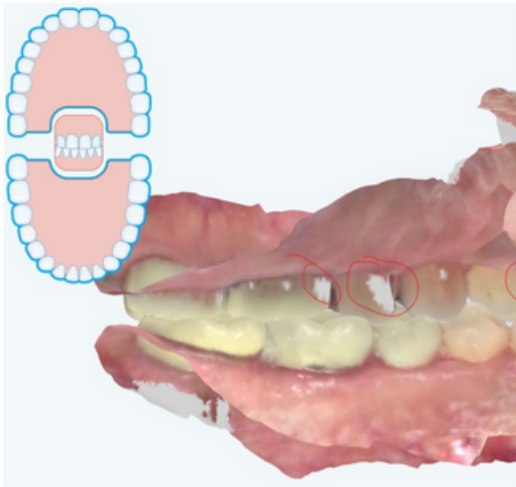


# STL File Export Instructions

## EXPORTING THE STL FILES FROM ITERO OR INTRA ORAL SCANNER

- ☐ Scan on iRecord setting if possible
- ☐ Capture the vestibule and palate
- ☐ Make sure that you have captured the bite scans in correct occlusion. An accurate wax up and planning cannot be done if the bite is not captured correctly. Review scan to check occlusion.
- ☐ Make sure that there are no holes or distortion on the teeth or Palate. Holes or distortion may result in a guide that does not fit. Review the scan for holes/missing information.
- ☐ AI should be turned off to capture posterior ridge for missing 2nd molars. Capture the entire ridge of the edentulous area. Manually trim cheek tissue from obscuring the crowns



**DO NOT LEAVE HOLES  
ON MODEL**



**CAPTURE ENTIRE RIDGE OF EDENTULOUS  
AREA AS FAR BACK AS POSSIBLE**

### DIRECT TRANSFER - SHARING MODELS/ INTRA ORAL SCANS THROUGH YOUR SCANNER

- iTero Lab ID (C&M Surgical Guides) : [414424\\_manufacturing@cdental.com](mailto:414424_manufacturing@cdental.com)
- 3Shape/Trios: (C&M Surgical Guides) [manufacturing@cdental.com](mailto:manufacturing@cdental.com)
- DS Core (Prime Scan): [digital@cdental.com](mailto:digital@cdental.com)
- AXS Straumann: [digital@cdental.com](mailto:digital@cdental.com)

# STL File Export Instructions

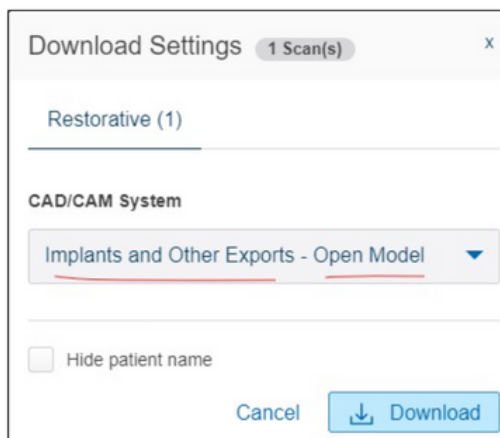
## EXPORTING THE STL FILES FROM INTRA ORAL SCANNER

### OR, TO EXPORT STLS YOURSELF:

Itero Export instructions (For other manufacturers follow your scanner manual or contact your rep.

Use the same export parameters as listed below. Export in STL format)

If the Itero was scanned as restorative, choose Implants and Other exports-Open Model



The screenshot shows a 'Download Settings' dialog box with a close button (X) in the top right corner. Below the title bar, it says 'Restorative (1)'. Under the 'CAD/CAM System' section, there is a dropdown menu currently set to 'Implants and Other Exports - Open Model'. At the bottom left, there is a checkbox labeled 'Hide patient name' which is unchecked. At the bottom right, there are two buttons: 'Cancel' and 'Download' (with a download icon).

Choose these options if available



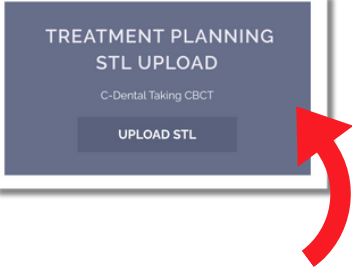

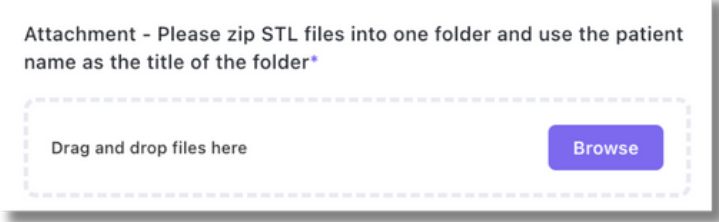
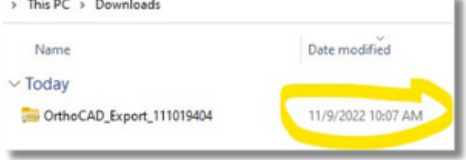
The screenshot shows an 'Export' settings dialog box. It has three rows of settings, each with a label on the left and a value on the right with a dropdown arrow. The first row is 'Export Type' set to 'Open Shell'. The second row is 'Data Format' set to 'File per Arch (arches oriented in occl...'. The third row is 'File Type' set to 'STL+PLY'. At the bottom left, there is a checkbox labeled 'Hide patient name' which is unchecked. At the bottom right, there are two buttons: 'Cancel' and 'Export'.

# STL File Export Instructions

## EXPORTING THE STL FILES FROM INTRA ORAL SCANNER

### UPLOADING THE DATA FILES TO CDENTAL WEBSITE

*By uploading the case you are agreeing to service fees for case preparation of your scans for surgical planning. Fee lists are available upon request.*

- STEP 1** **GO TO CASE UPLOAD PAGE ON CDENTAL WEBSITE**
- 
- CLICK "UPLOAD STL"**
- STEP 2** **WAX UPS ARE ENCOURAGED FOR ACCURATE PLANNING. WAX UPS ARE \$25 PER TOOTH. BE SURE TO INCLUDE WAX UP SITES FOR MISSING TEETH IF NEEDED**
- STEP 3** **CHOOSE ONE OF THE FOLLOWING OPTIONS**
- 
- [Click Here for Upload Page](#)
- STEP 4** **BROWSE TO THE DOWNLOAD FOLDER AND ATTACH THE ORTHOCAD EXPORT FOLDER THAT YOU EXPORTED FROM WWW.MYITERO.COM**
- See page 1 for export instructions.*
- 
- STEP 5** **MAKE SURE TO SELECT THE ONE WITH THE DATE AND TIME THAT YOU EXPORTED THE FILE**
- 
- STEP 6** **Make sure to HIT SUBMIT**



If you have any questions, please contact our Sara Tarazi - Chief Technologist

✉ starazi@cdental.com

☎ 510-368-7240