

# Edentulous Cases | Radiographic Guide Protocol

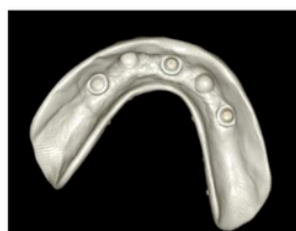


Dual scans can be used for most patients. C-Dental recommends the dual scan for patients with 3 teeth or less.

Please follow the checklist below to make sure the radiographic denture will work properly for the scan.

## THE DENTURE SHOULD HAVE ALL OF THE FOLLOWING:

- **NO soft reline!! (squishy inside)**
- NO metal or radiopaque material
- Excellent fit to soft tissue and patient cast
- Hard reline only - no soft reline or denture adhesive material on inside of denture
- 6 BB Stickers will be placed on the Denture for a Dual Denture CBCT of the patient wearing the Denture and the Denture by itself. We will merge the denture in the In2guide software program. Our imaging centers have the BB stickers.



\*\* anchor pins

## PVS BITE SUPPORT

Dentures with \*\*anchors to implants may not need a bite support, all other cases please provide a PVS bite support to correctly seat the dentures to the intaglio surface during the patient scan. This is important to the planning process so that the implants will be placed correctly during the surgery. The Guide will have a duplicate fit of the denture.

**PVS BITE SUPPORT FABRICATION INSTRUCTIONS ON PAGE 2**



## WHAT DO YOU MARK ON THE PATIENT REFERRAL FORM?



1. Choose **Small View** and select arch of interest
2. Choose **Implant Survey**
3. Indicate planning program
4. Choose virtual design option - **Dual Scan - Radiographic Guide or Marked Denture**

[Click Here for eReferral](#)

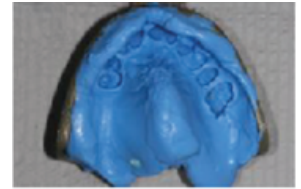


# Edentulous Cases | Radiographic Guide Protocol

## STEP 1

**TAKE PREFERRED POLYVINYL SILOXANE (PVS) IMPRESSION, OR IF NECESSARY, ALGINATE IMPRESSION WITH A PLASTER MODEL POURED IMMEDIATELY.**

- No drag
- No pull
- No bubbles
- Cover palette
- Deep into vestibule
- Cover retro molar pad



## STEP 2

**PREPARE PLASTER MODELS**

- Must accurately reproduce the buccal and lingual margins
- Vestibule must be clear and understated

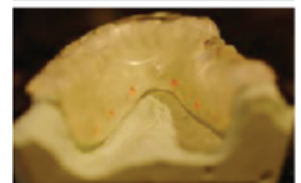
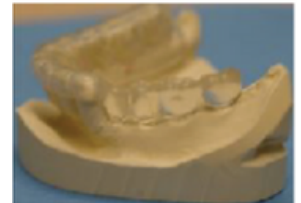


## STEP 3

**FABRICATE RADIOGRAPHIC GUIDE**

 ***The accuracy of this guide is very important, as it is the basis for fabricating the surgical guide.***

- Use clear orthodontic acrylic
- Tooth position and size should represent the final prosthesis
- The crowns should be distinctively represented on the facial/buccal and occlusal aspects of guide
- Guide should cover occlusal surface of full arch
- Guide should extend over the gums on lingual/palatal side



## STEP 4

**6 RADIOGRAPHIC MARKERS**

- Here are the bb markers we use
- All lingual
- On varying horizontal planes
- On flange, below gingival plane on the mandible - above on maxilla



## STEP 5

**FABRICATE BITE SUPPORT FOR USE DURING CBCT SCAN**

- Ensure no overlap of incisal or posterior occlusion
- Use stiff, radiolucent bite support material
- Cover complete arch
- If teeth are missing in opposing arch, fill edentulous space with index material to make contact with alveolar ridge